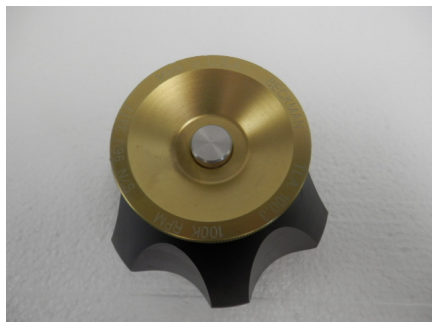


## TLA-100.3 Fixed-Angle Rotor



TLA-100.3 Rotor Package, Fixed Angle Rotor (30 deg Angle), Titanium.

Rating: Not Rated Yet

**Price**

Sales price \$2,950.00

[Ask a question about this product](#)

Manufacturer [Beckman](#)

### Description

Major Applications: Pelleting of subcellular fractions in 5-30 minutes; pelleting RNA in 1-2 hours; plasmid DNA separation in 6 hours. Note: Non-precipitating solutions up to 1.7 g/mL in density can be run in this rotor without a reduction in rotor speed. For use in the Optima MAX-XP Benchtop Ultracentrifuge, Optima TLX personal micro-ultracentrifuges, and Optima MAX high-capacity personal micro-ultracentrifuges, and the discontinued TL-100 and Optima TL micro-ultracentrifuges.

### Specifications

Platform: Tabletop UCF

Rotor Type: Fixed-Angle (Ultracentrifugation)

Maximum RPM: 55,000 rpm